

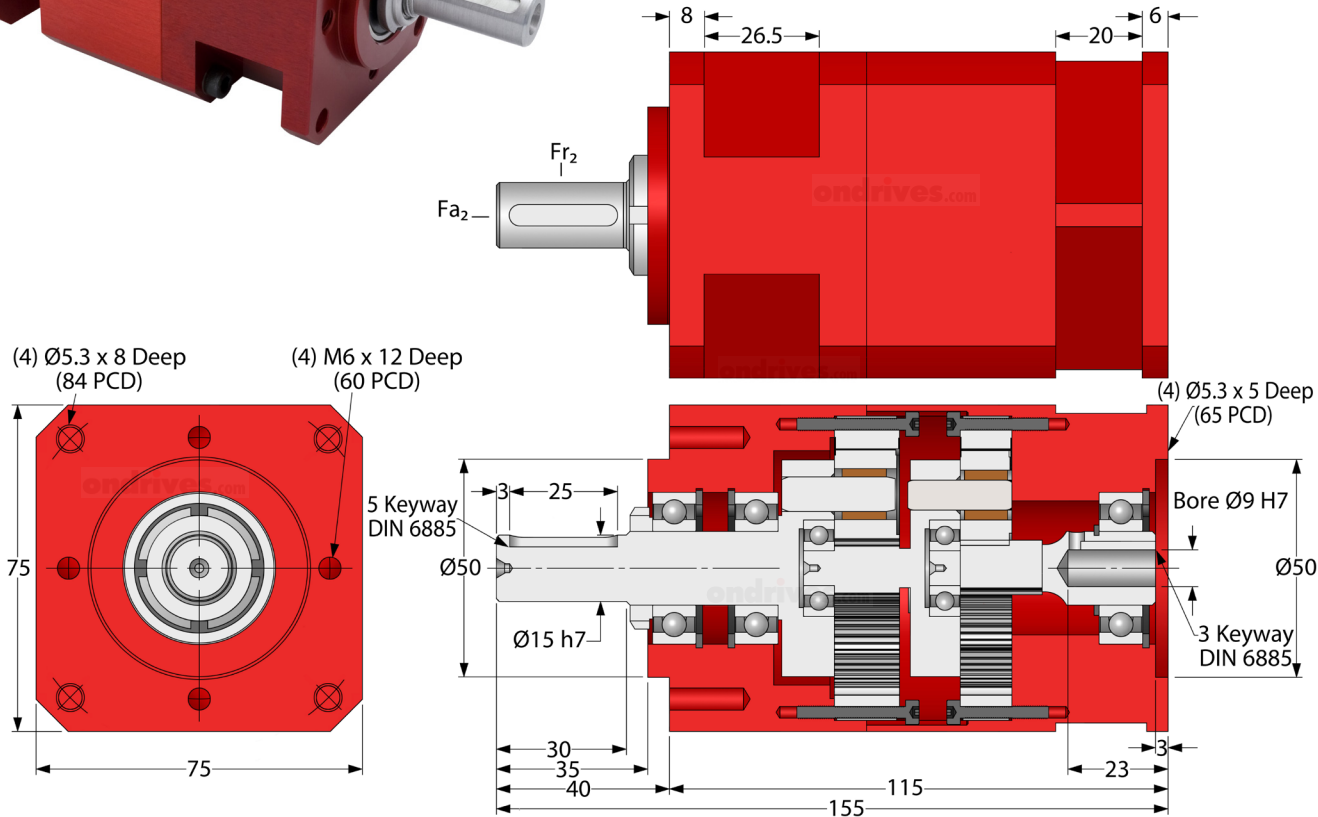
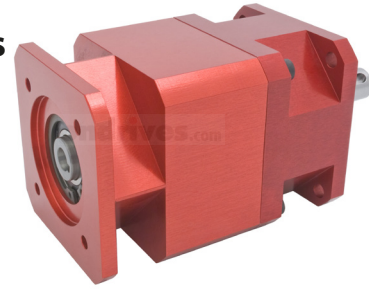
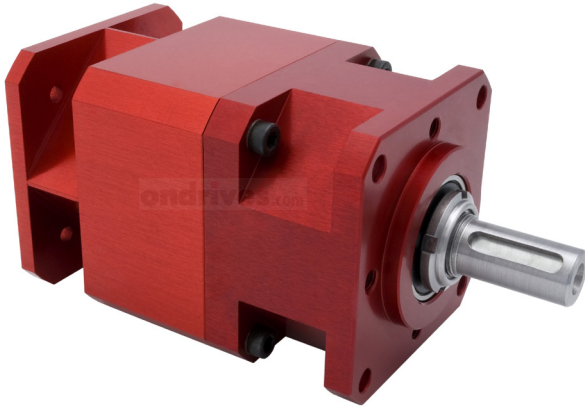
EHD08
9-16

ondrives

Precision Gears

Inline Epicyclic Planetary 75x75 Gearbox Reducers

9mm Input Bore • 15mm Output Shaft • T_{2max} 50Nm • **9:1 - 16:1**



Part Numbers						
Output Backlash j	Output Backlash j A	Output Backlash j AR	Gear Ratio i	Efficiency ηz	Output Rotation Direction	Nom Output Torque T_{2n}
$\leq 0.50^\circ$	$\leq 0.25^\circ$	$\leq 0.13^\circ$		n1nom		Nm
EHD08-9	EHD08-9A	EHD08-9AR	9:1	86%	Same as Input	43
EHD08-12	EHD08-12A	EHD08-12AR	12:1	86%	Same as Input	43
EHD08-15	EHD08-15A	EHD08-15AR	15:1	86%	Same as Input	43
EHD08-16	EHD08-16A	EHD08-16AR	16:1	86%	Same as Input	45

Weight: 2.1kg.

Nom. Input Speed [S1 T_{2n} n1nom]: 1,000 min^{-1} (r/min)

Max. Input Speed n1max: 3,000 min^{-1} (r/min)

Lubrication: Grease Shell Gadus S5 V4P 2.5

Lubrication Temperature: Max. Operating $\approx 60^\circ\text{C}$

Max. Output Radial Load F_{r2} : 300N.

Max. Output Axial Load F_{a2} : 200N.

Testing in your application is necessary.

You will need to assess duty cycles and confirm suitability with your own calculations.

Figures listed are for guidance only.

Cooling may be needed dependent on application.

ondrives
Precision Gears

T: +44 1246 455500

sales@ondrives.com www.ondrives.com

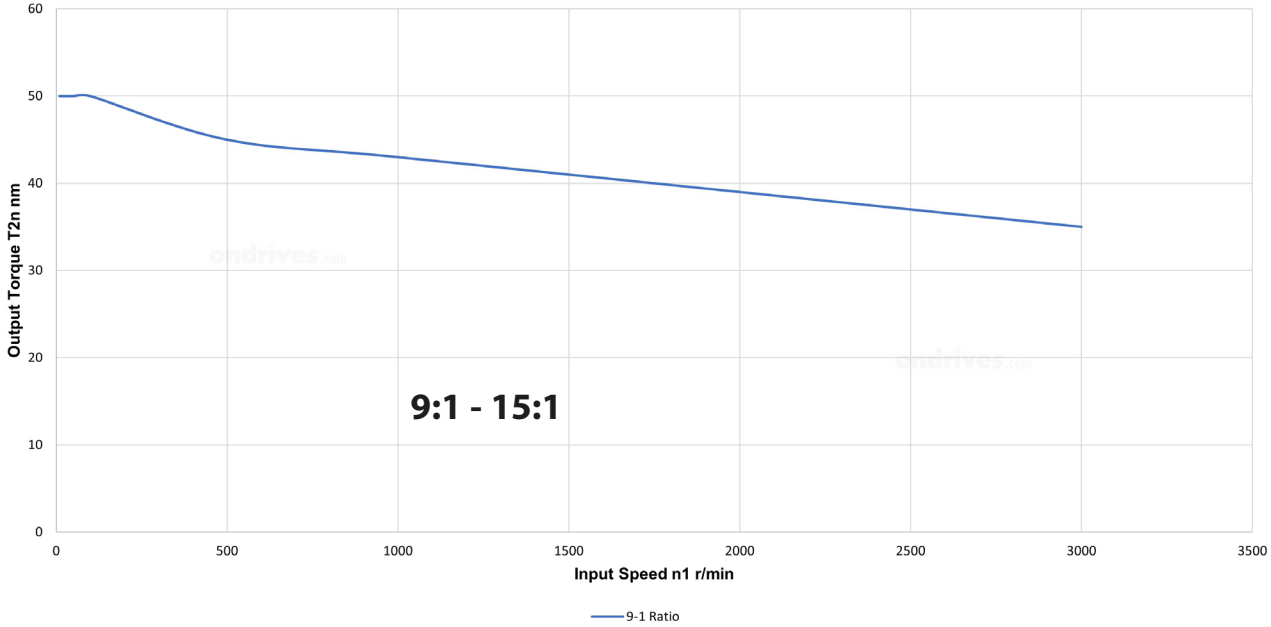
Updated May 2022 subject to change for use as a guide only.

Inline Epicyclic Planetary Gearbox

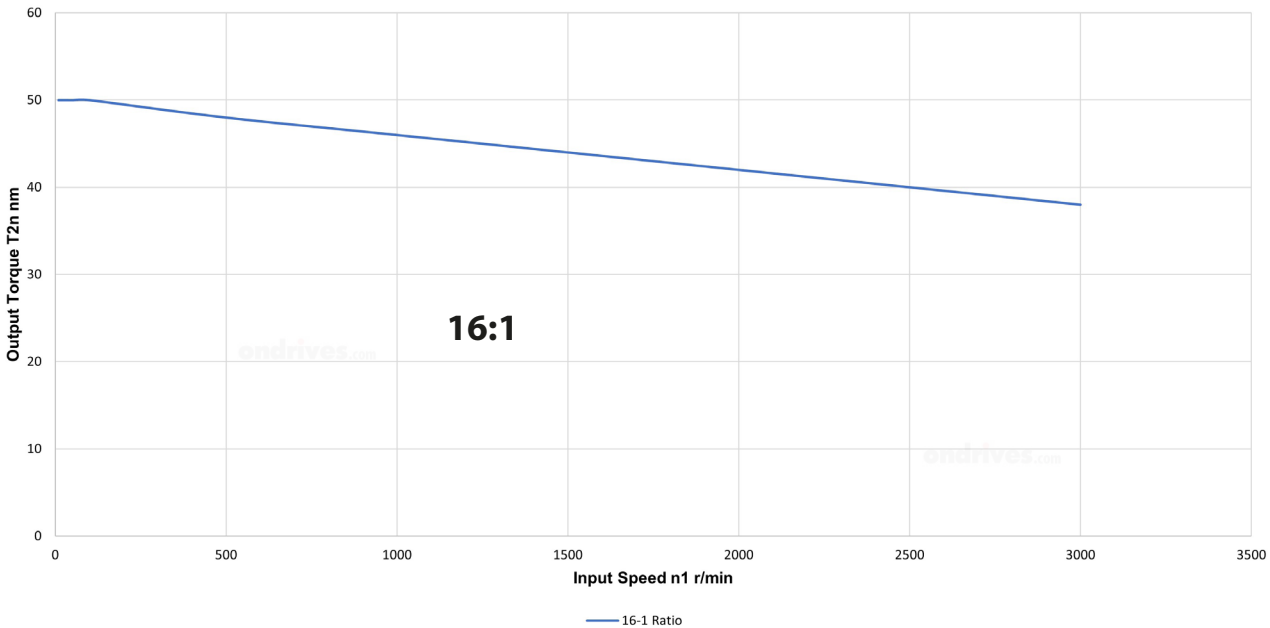
Inline Epicyclic Planetary 75x75 Gearbox Reducers

9mm Input Bore • 15mm Output Shaft • T_{2max} 50Nm • 9:1 - 16:1

EHD Inline Epicyclic Gearbox



EHD Inline Epicyclic Gearbox



Inline Epicyclic Planetary Gearbox

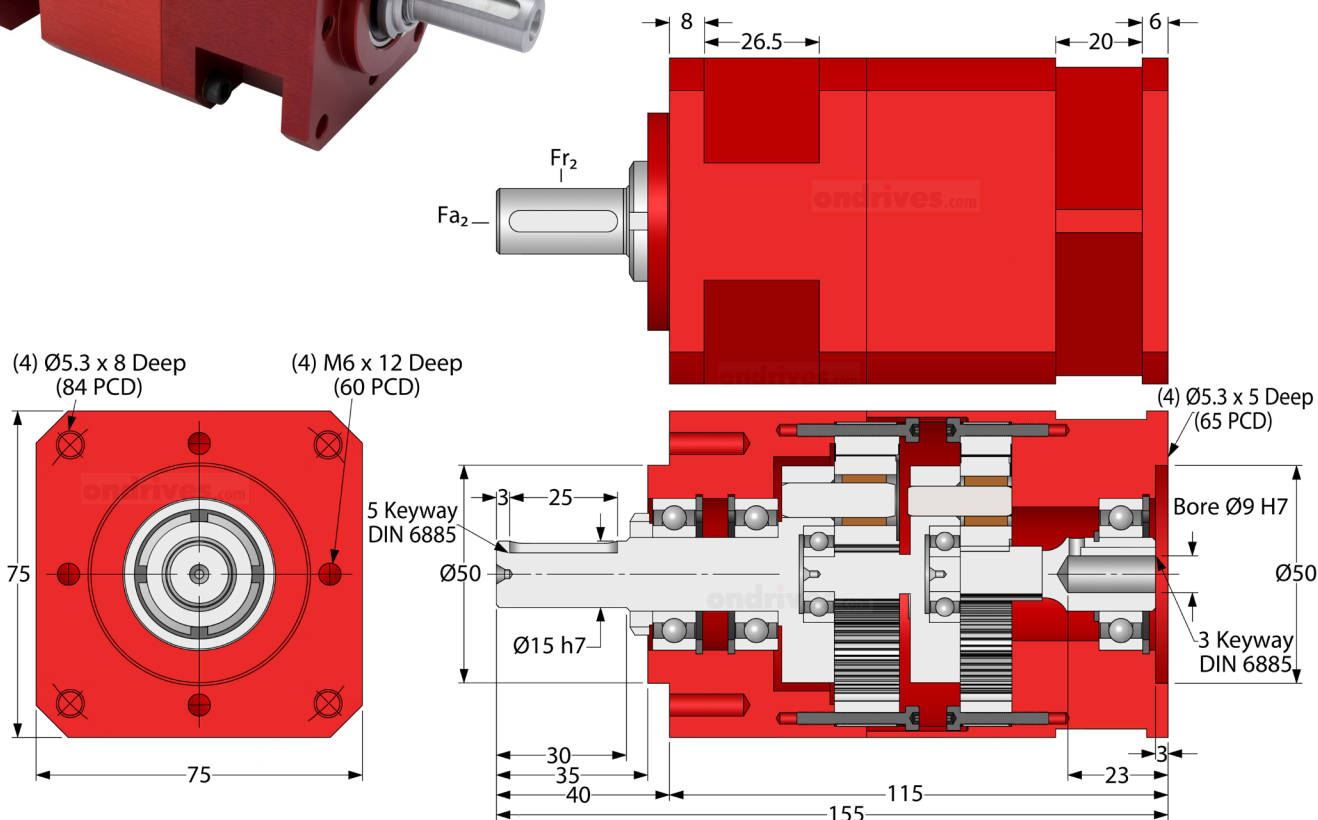
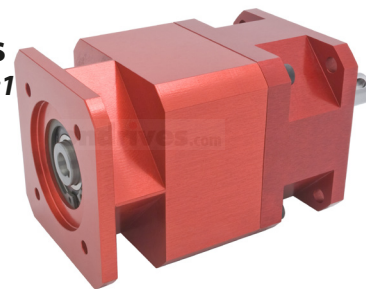
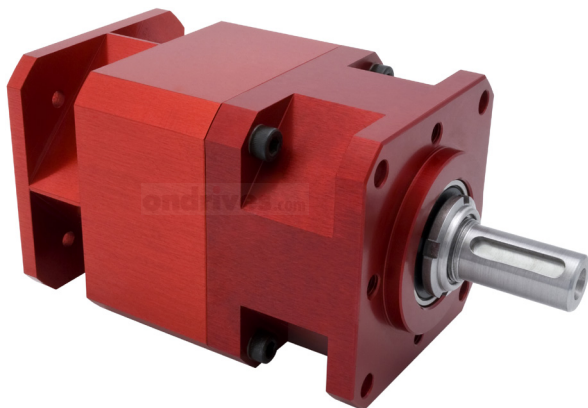
EHD08
18-36

ondrives

Precision Gears

Inline Epicyclic Planetary 75x75 Gearbox Reducers

9mm Input Bore • 15mm Output Shaft • T_{2max} 45Nm - 50Nm • **18:1 - 36:1**



Part Numbers						
Output Backlash j	Output Backlash j A	Output Backlash j AR	Gear Ratio i	Efficiency ηz	Output Rotation Direction	Nom Output Torque T_{2n}
$\leq 0.50^\circ$	$\leq 0.25^\circ$	$\leq 0.13^\circ$		n1nom		Nm
EHD08-18	EHD08-18A	EHD08-18AR	18:1	86%	Same as Input	46
EHD08-20	EHD08-20A	EHD08-20AR	20:1	86%	Same as Input	46
EHD08-24	EHD08-24A	EHD08-24AR	24:1	86%	Same as Input	46
EHD08-25	EHD08-25A	EHD08-25AR	25:1	86%	Same as Input	46
EHD08-30	EHD08-30A	EHD08-30AR	30:1	86%	Same as Input	46
EHD08-36	EHD08-36A	EHD08-36AR	36:1	86%	Same as Input	41

Weight: 2.1kg.

Nom. Input Speed [S1 T_2 , n1nom]: 1,000 min^{-1} (r/min)

Max. Input Speed n1max: 3,000 min^{-1} (r/min)

Lubrication: Grease Shell Gadus S5 V4P 2.5

Lubrication Temperature: Max. Operating $\approx 60^\circ\text{C}$

Max. Output Radial Load F_{r2} : 300N.

Max. Output Axial Load F_{a2} : 200N.

Testing in your application is necessary.

You will need to assess duty cycles and confirm suitability with your own calculations.

Figures listed are for guidance only.

Cooling may be needed dependent on application.

ondrives
Precision Gears

T: +44 1246 455500

sales@ondrives.com www.ondrives.com

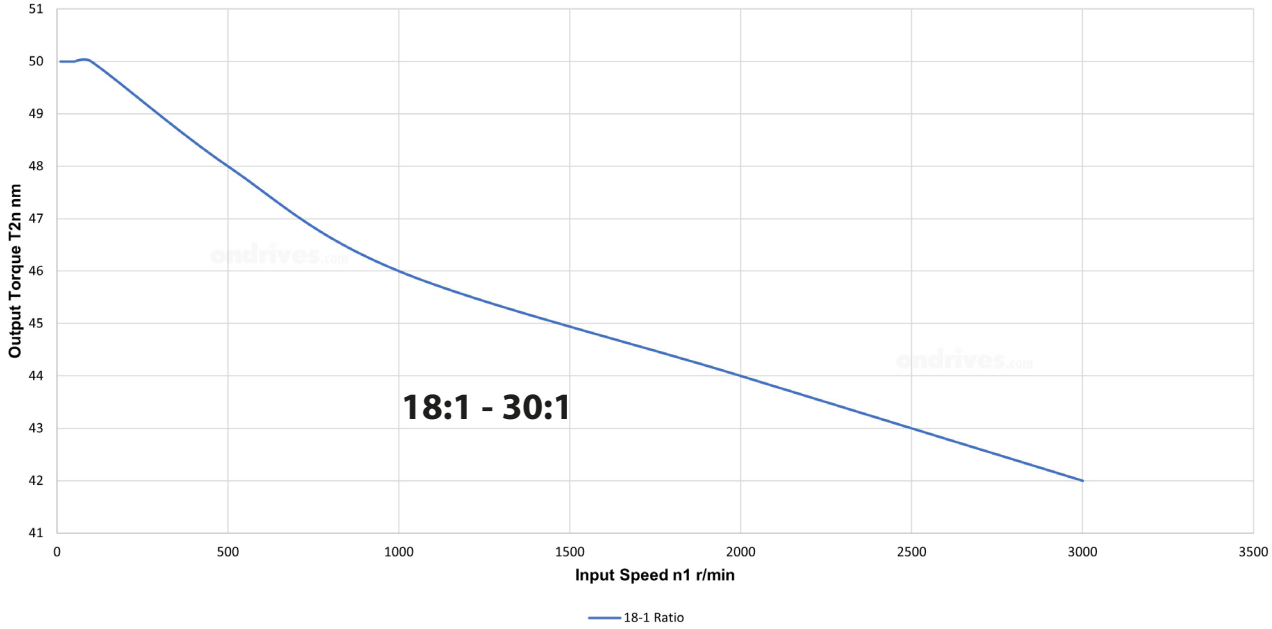
Updated May 2022 subject to change for use as a guide only.

Inline Epicyclic Planetary Gearbox

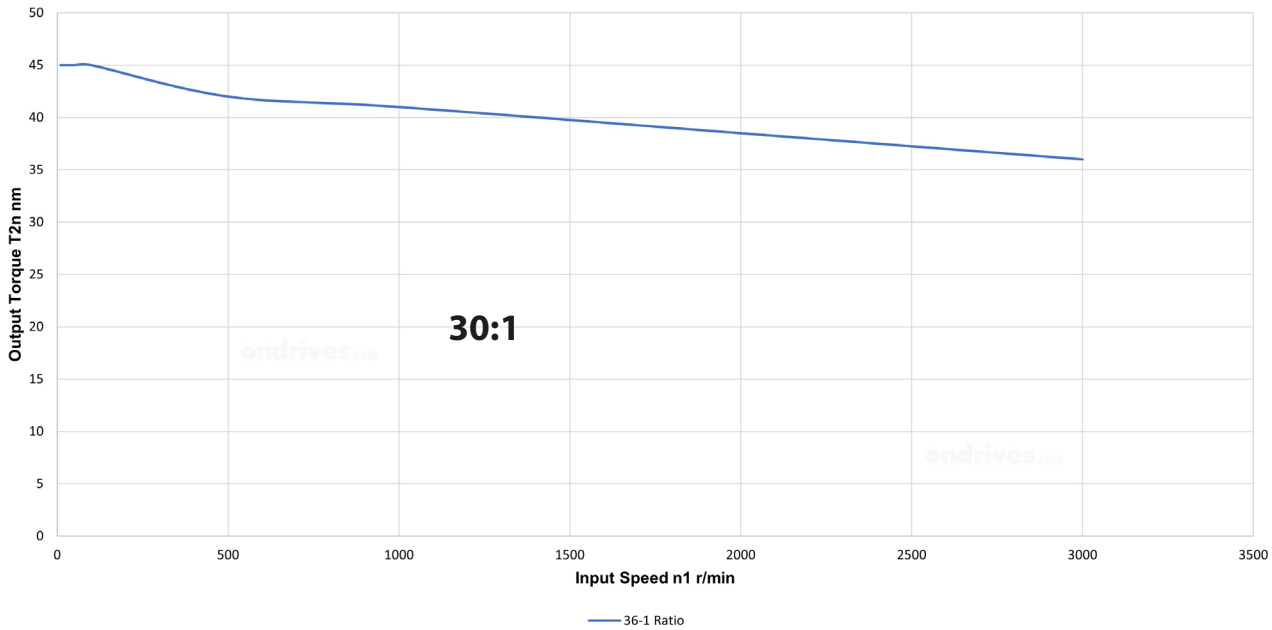
Inline Epicyclic Planetary 75x75 Gearbox Reducers

9mm Input Bore • 15mm Output Shaft • T_{2max} 45Nm - 50Nm • **18:1 - 36:1**

EHD Inline Epicyclic Gearbox



EHD Inline Epicyclic Gearbox



Inline Epicyclic Planetary Gearbox